



**11, Gwilt Drive, Tudor Park Oteley Road, Shrewsbury, SY2 6GQ**  
£1,500 Per Month





11, Gwilt Drive, Tudor Park Oteley Road, Shrewsbury, SY2 6GQ

**£1,500 Per Month**

VIRTUAL TOUR AVAILABLE - A recently built, spacious four bedroom detached family home in the popular Tudor Park development off the Oteley Road. The property has a garage and driveway parking for two cars. Front and rear gardens with patio.

AVAILABLE FROM: 06/11/24

## Description

Comprising: Entrance hall with WC and large wardrobe with hanging rail, kitchen / breakfast room with integrated fridge freezer, dishwasher and oven and gas hob, utility with under counter space for washing machine and dryer, breakfast area with patio doors to rear garden, spacious living room with patio doors to rear garden, dining room with large bay window. Stairs to first floor landing, bedroom one with en-suite shower room, two further double bedrooms and fourth bedroom / office. Front and rear garden with patio, single garage with light and power, driveway parking for two cars. Gas Central Heating. Double Glazing. EPC B.



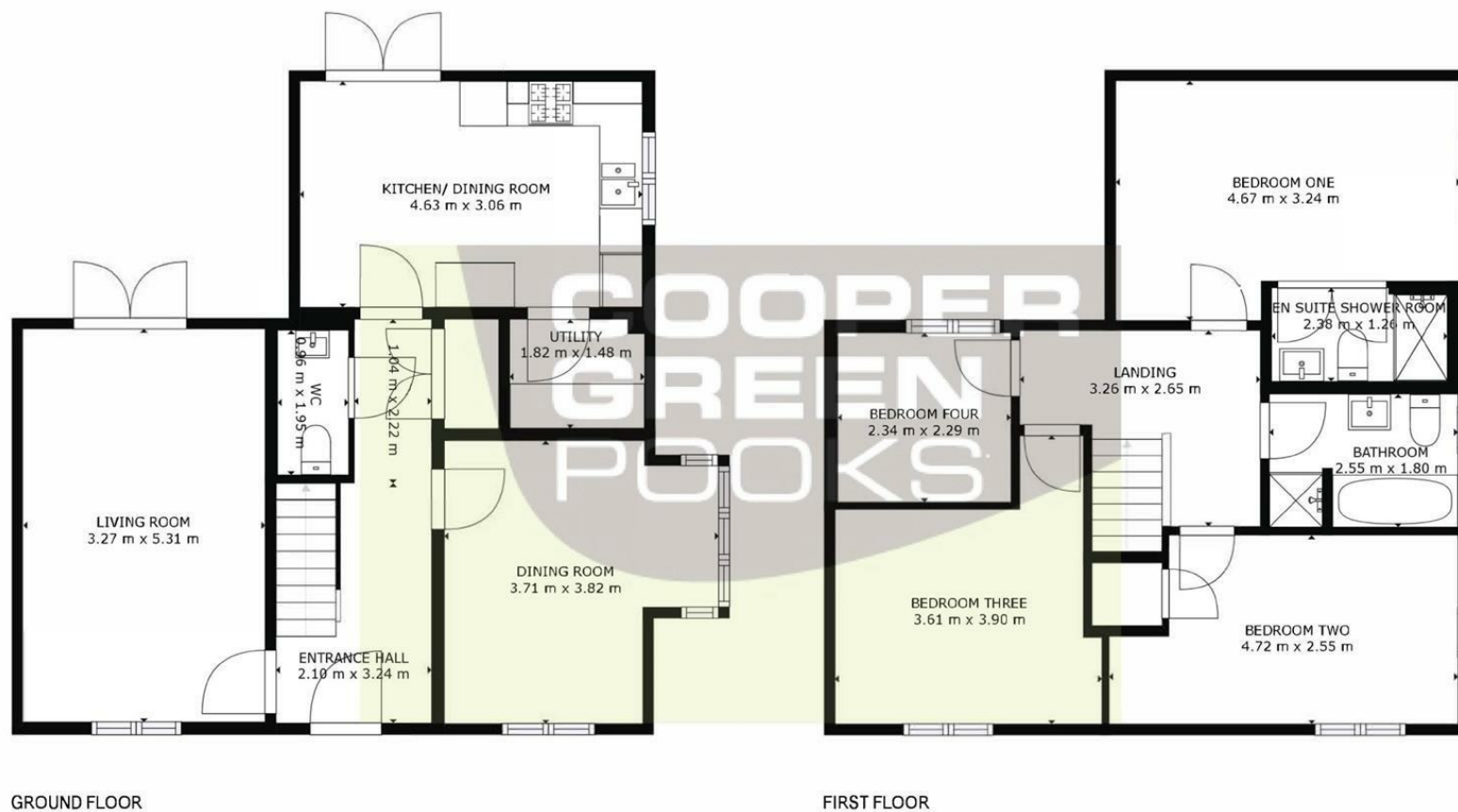
Unfurnished

Council Tax Band: E

Available: 6th November 2024

EPC: B

## Floor Plans



GROSS INTERNAL AREA  
 GROUND FLOOR: 62 m<sup>2</sup>, FIRST FLOOR: 60 m<sup>2</sup>  
 TOTAL: 122 m<sup>2</sup>  
 SIZES AND DIMENSIONS ARE APPROXIMATE, ACTUAL MAY VARY.



These particulars, whilst believed to be accurate are set out as a general outline only for guidance and do not constitute any part of an offer or contract. Intending purchasers should not rely on them as statements of representation of fact, but must satisfy themselves by inspection or otherwise as to their accuracy. No person in this firm's employment has the authority to make or give any representation or warranty in respect of the property.